



VIPINGO  
DEVELOPMENT  
LIMITED

A member of Centum Group

---

# Investor Progress Update MAY 2021

---

[www.vipingodevelopment.com](http://www.vipingodevelopment.com)



# Milestones

## Of The Month



### 1. Complete Projects

- Awali Estate
- Vipingo Development Sea Water Desalination Plant



### 3. Third Party Projects

- Vipingo Leisure Centre
- Food Processing Factory



### 2. Ongoing Projects

- 1255 Palm Ridge



### 4. Serviced Plots

- Kingswood Park
- Vipingo Breeze Estate









Space to make  
*Memories*











Complete  
*Projects*









# Project

## Fact Sheet

### AWALI ESTATE PROJECT PROGRESS FACT SHEET

No of units	74
Construction duration	Complete
Construction duration to date	Complete
Progress status	Complete
Show Houses	Complete

### AMENITIES AND UTILITIES PROGRESS

COMPONENT	STATUS	TARGET COMPLETION DATE
Children's play area	Complete	Complete
Perimeter fence	Complete	Complete
CCTV	Complete	Complete

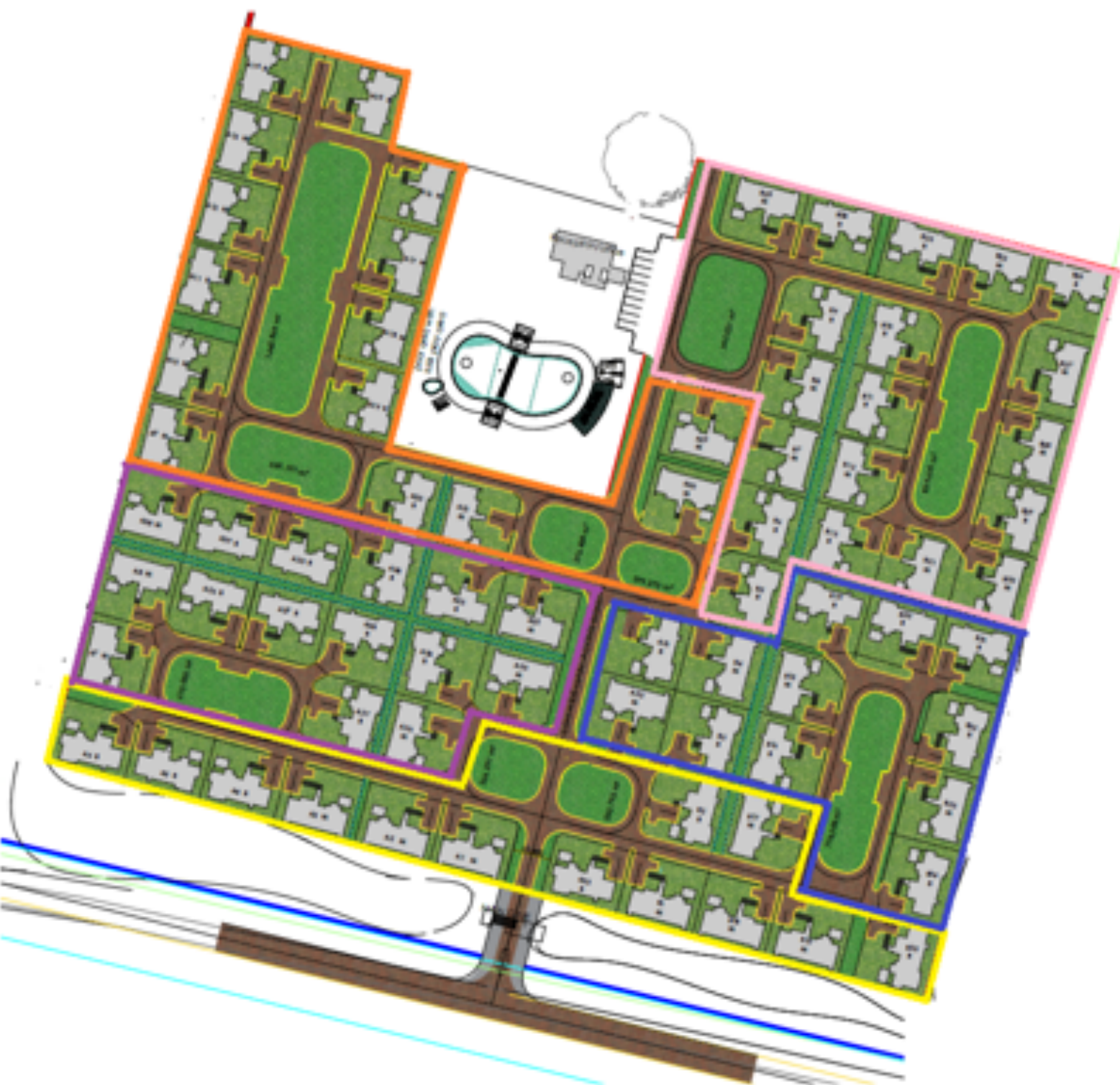
#### INFRASTRUCTURE

Roads	Complete	Complete
Permanent power connection	Complete	Complete
Gate house	Complete	Complete
ICT	Complete	Complete

#### LANDSCAPING

Grassing	Complete	Complete
Trees and Flowers	Complete	Complete





	BATCH 1
	BATCH 2
	BATCH 3
	BATCH 4
	BATCH 5



# Move In













Enjoy the *Lifestyle*

---









# VIPINGO DEVELOPMENT SEA WATER DESALINATION PLANT

The Vipingo Development sea water desalination plant installation is now complete. The 3 million litre capacity plant will supply reliable water to the development. **The plant is now operational.**





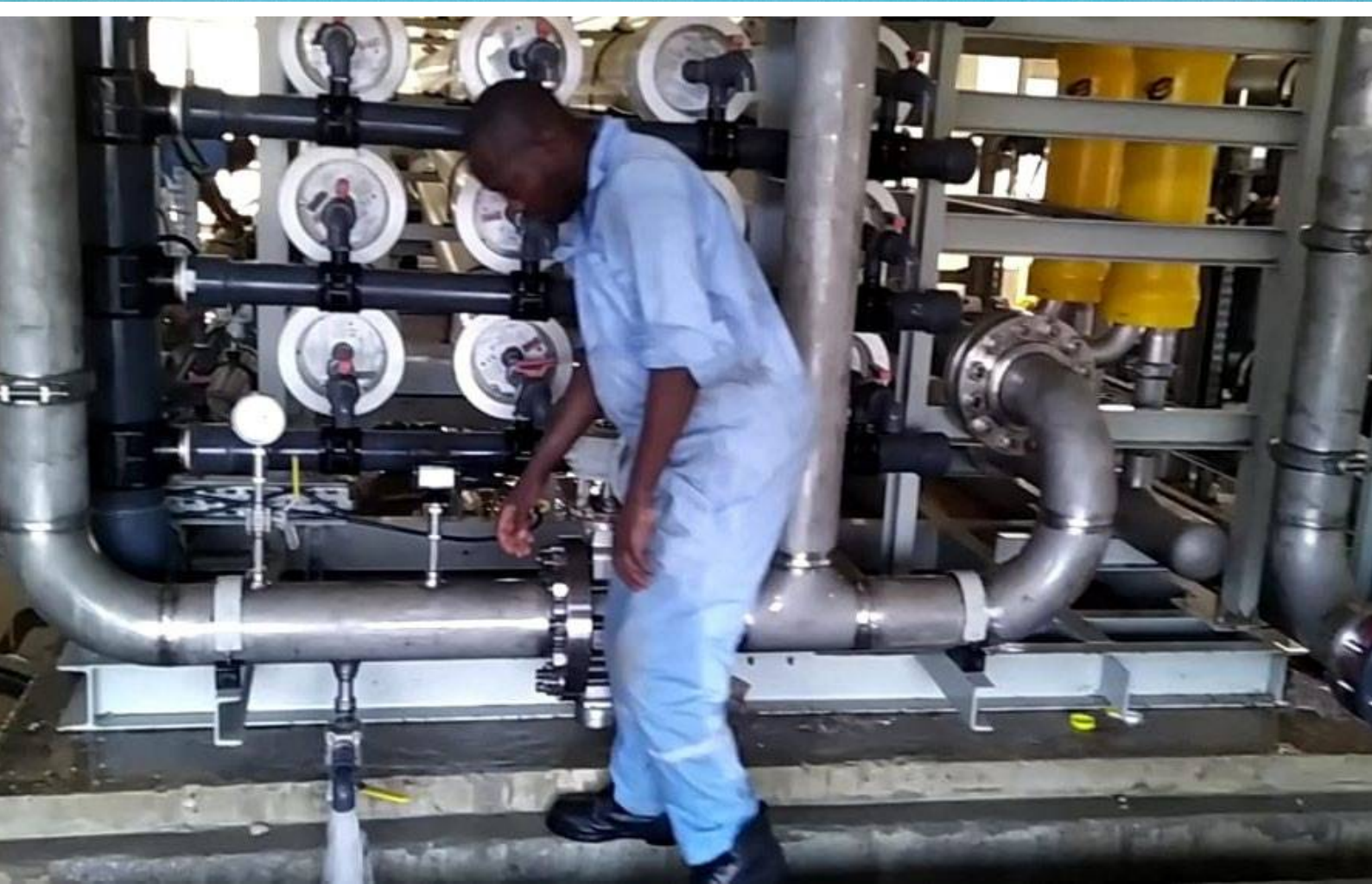
# PROGRESS STATUS



Additional storage tanks







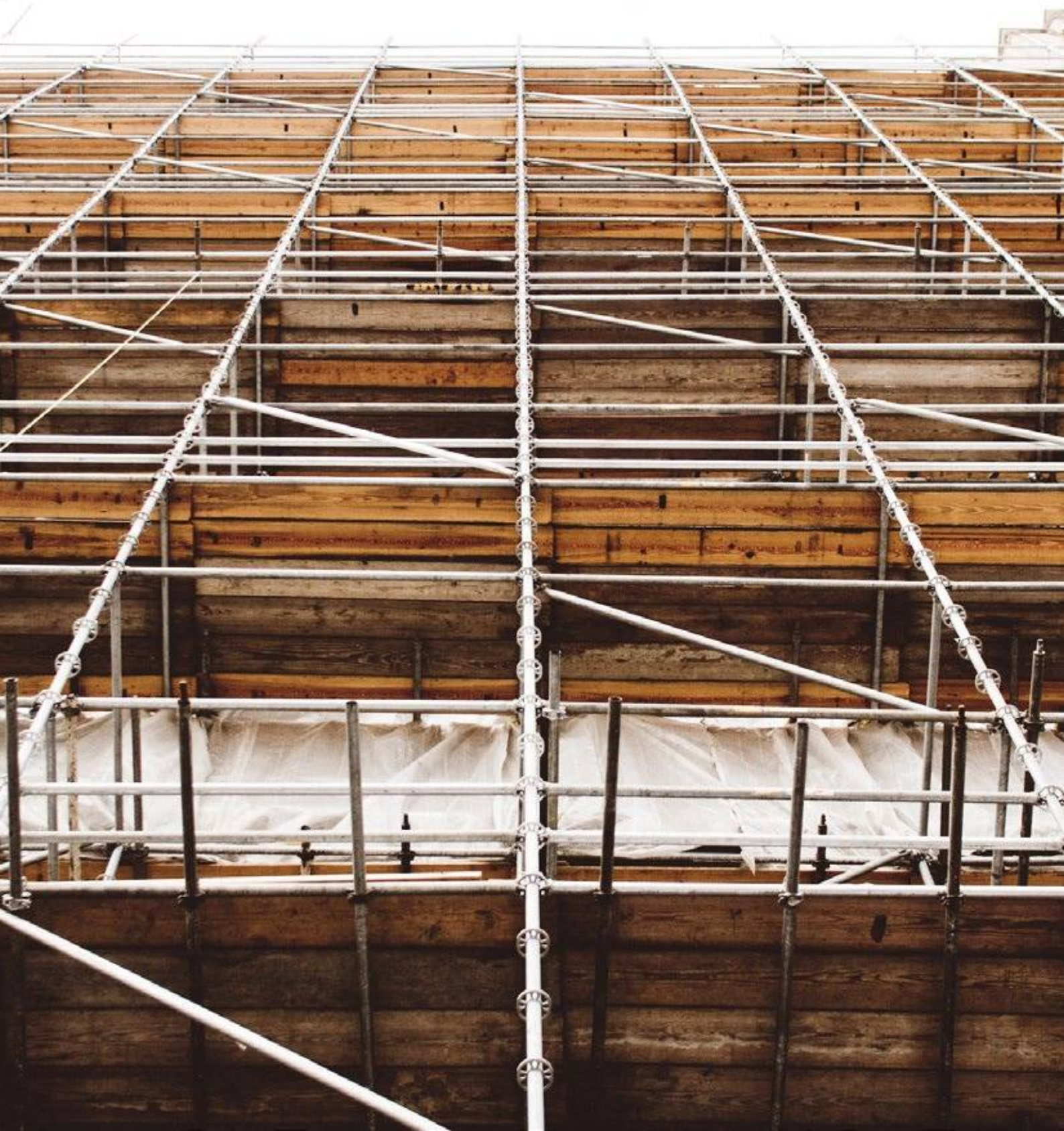






# Ongoing *Projects*

- 
- 1255 Palm Ridge
- 





# 1255 PALM RIDGE









# Project

## Fact Sheet

### 1255-PALM RIDGE PROJECT PROGRESS FACT SHEET

No. of units	330 (Phase 1), 110 Units (Phase 2)
Construction duration to date	99 Weeks (Phase 1)
Construction duration to completion	3 Weeks (Phase 1), 23 Weeks (Phase 2)
Show Houses	Complete

#### MAY ACTIVITIES

Block A1	Complete
Block B1	Complete
Block C1	Complete
Block A2	Complete, snags ongoing
Block B2	Complete, snags ongoing
Block C2	Internal finishes ongoing
Block A3	Internal finishes ongoing
Block B3	Internal finishes ongoing
Block C3	Complete, snags ongoing

#### PHASE 2

Block D1	Plastering complete
Block D2	Plastering complete
Block D3	Plastering complete

### AMENITIES AND UTILITIES PROGRESS

COMPONENT	STATUS	TARGET COMPLETION DATE
Swimming pool	Pending Tiling	May 2021
Children's play area	Grassing ongoing	May 2021
Parks	90% Done	May 2021
Perimeter fence	Complete	Complete

#### INFRASTRUCTURE

Roads	Complete	Complete
Permanent Power connection	Complete	Complete
Gate House	Complete	Complete
CCTV	Ongoing	May 2021

#### LANDSCAPING

Grassing	90% Done	May 2021
Trees and Flowers	95% Done	May 2021



# CONSTRUCTION PROGRESS

A1



A2



A3





B1



B2





B3



C1



C2





C3



D1





D2

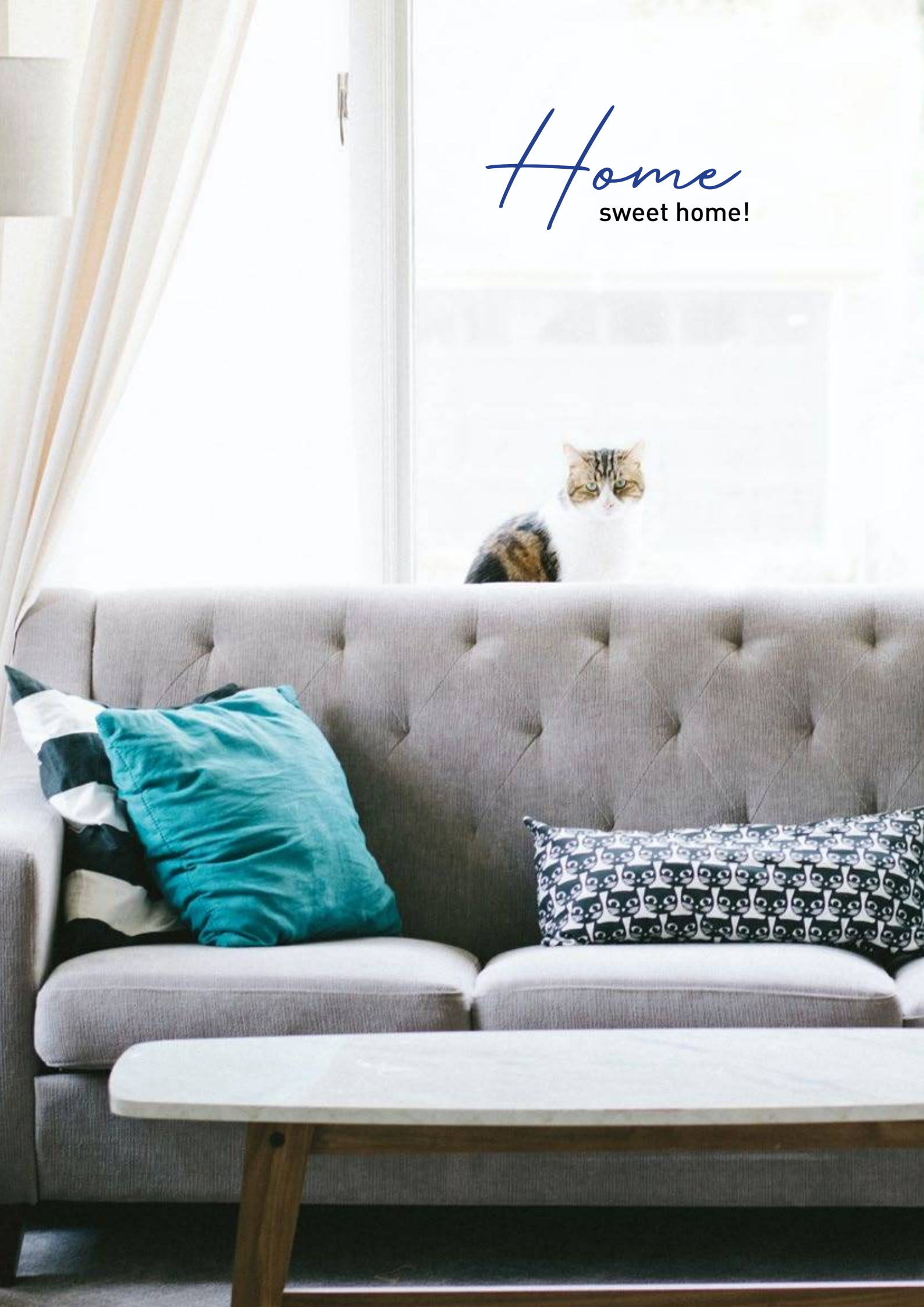


D3





*Home*  
sweet home!





# INTERNAL FINISHES ONGOING

























Experience the comfort of

*Luxury Living*





# INFRASTRUCTURE & AMENITIES

## Landscaping









## Pavements









Gatehouse



Parking





Perimeter Fence





Swimming Pool







# *Progress* Third Party Projects

- 
- Vipingo Leisure Centre
  - Food Processing Factory
-



# VIPINGO LEISURE CENTRE

*It is taking shape!*

Indulge in the best of shopping, dining and leisure at Vipingo Leisure Centre mall. The mall is conveniently located near 1255-Palm Ridge, Kingswood Park and Awali Estate.

Looking for retail or office space?

Contact Jane via [leasing@vipingoleisurecentre.com](mailto:leasing@vipingoleisurecentre.com)



Construction of the mall is ongoing with completion scheduled for Q4 of 2021. The mall's shell and core is now ready.











# PROGRESS STATUS











We thank the developers of Vipingo Leisure Centre for supporting and investing in Vipingo Development.



# FOOD INDUSTRY



One of the largest cashew nut value addition factories is setting up within the Vipingo Investment Park. Construction of the food industry is ongoing and is scheduled for completion in Q4 of 2021.

The industry is expected to create over 1,000 jobs when fully operational.



# PROGRESS STATUS







We thank the food industry investors for supporting and investing in Vipingo Development.



# Serviced *Plots*

---

- Vipingo Breeze Estate
  - Kingswood Park
- 





---

# VIPINGO BREEZE ESTATE

*Do not miss out!*

---



The opportunity to own an ocean front plot is here. Buy from a ½ acre plot at Vipingo Development from KES 20 million. Get to experience the serene environment and breathtaking ocean front views that Vipingo Breeze has to offer.

Build your dream home within the development guidelines and enjoy a flexible payment plan of 20% on the letter of offer and the balance within 12 months.

**Book your plot today!**

---







# SITE PLAN





---

# KINGSWOOD PARK

*Build your dream home!*

---



Kingswod Park offers an opportunity to build your dream home from four unique typologies. The estate is conveniently located within the serene Vipingo Development. Get to own from 1/8th acre from KES 2.5 Million.

You will get to enjoy a 6-month payment period and 48 months development period.

**Book your plot today!**

---









## KINGSWOOD MIRABELLA

Excellent design for 1/4 acre plot



## KINGSWOOD MAISONETTE

Excellent design for 1/8 acre plot





## KINGSWOOD RIVERA

Excellent design for 1/8 acre plot



## KINGSWOOD BUNGALOW

Excellent design for 1/8 acre plot



---

# PROGRESS STATUS

Site road clearance ongoing.







## VIPINGO DEVELOPMENT LIMITED

1st Floor, Vipingo Ridge Conference Centre | P. O. Box 117 – 80119 Vipingo

Website: [www.vipingodevelopment.com](http://www.vipingodevelopment.com)

Email: [info@vipingodevelopment.com](mailto:info@vipingodevelopment.com)

Mobile: +254 740 400 215 | Tel: +254 4400 215

---

### WE ARE ON SOCIAL MEDIA



Vipingo Development LTD



Vipingodevelopmentlimited



@VipingoLTD



Vipingo Development